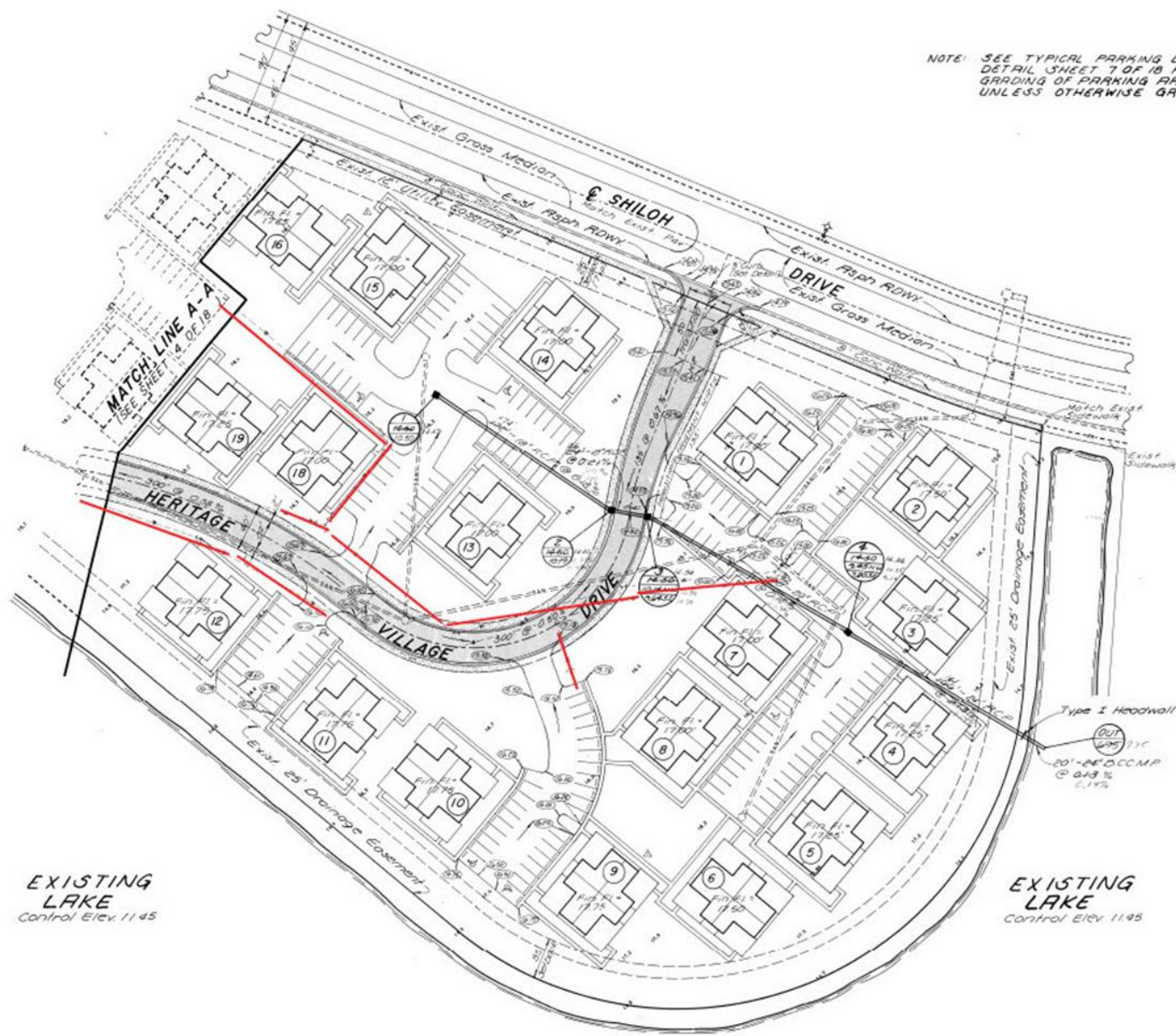


NOTE: SEE TYPICAL PARKING LOT DETAIL SHEET 7 OF 18 FOR GRADING OF PARKING AREAS UNLESS OTHERWISE GRADED



LEGEND

EXISTING STORM SEWER WITH CATCH BASIN	
STORM SEWER LINE WITH JUNCTION BOX	
STORM SEWER LINE WITH CATCH BASIN	
SANITARY SEWER LINE WITH MANHOLE	
SEWAGE FORCE MAIN	
WATERLINE	
PROPOSED ELEVATION	
EXISTING ELEVATION	
HIGH POINT	
DIRECTION OF FLOW	
FINISHED FLOOR ELEVATION	
STRUCTURE NUMBER	
GRATE/RIM ELEVATION	
F.L. ELEVATION	
EX. STRUCTURE NUMBER	
EX. GRATE/RIM ELEVATION	
EX. F.L. ELEVATION	

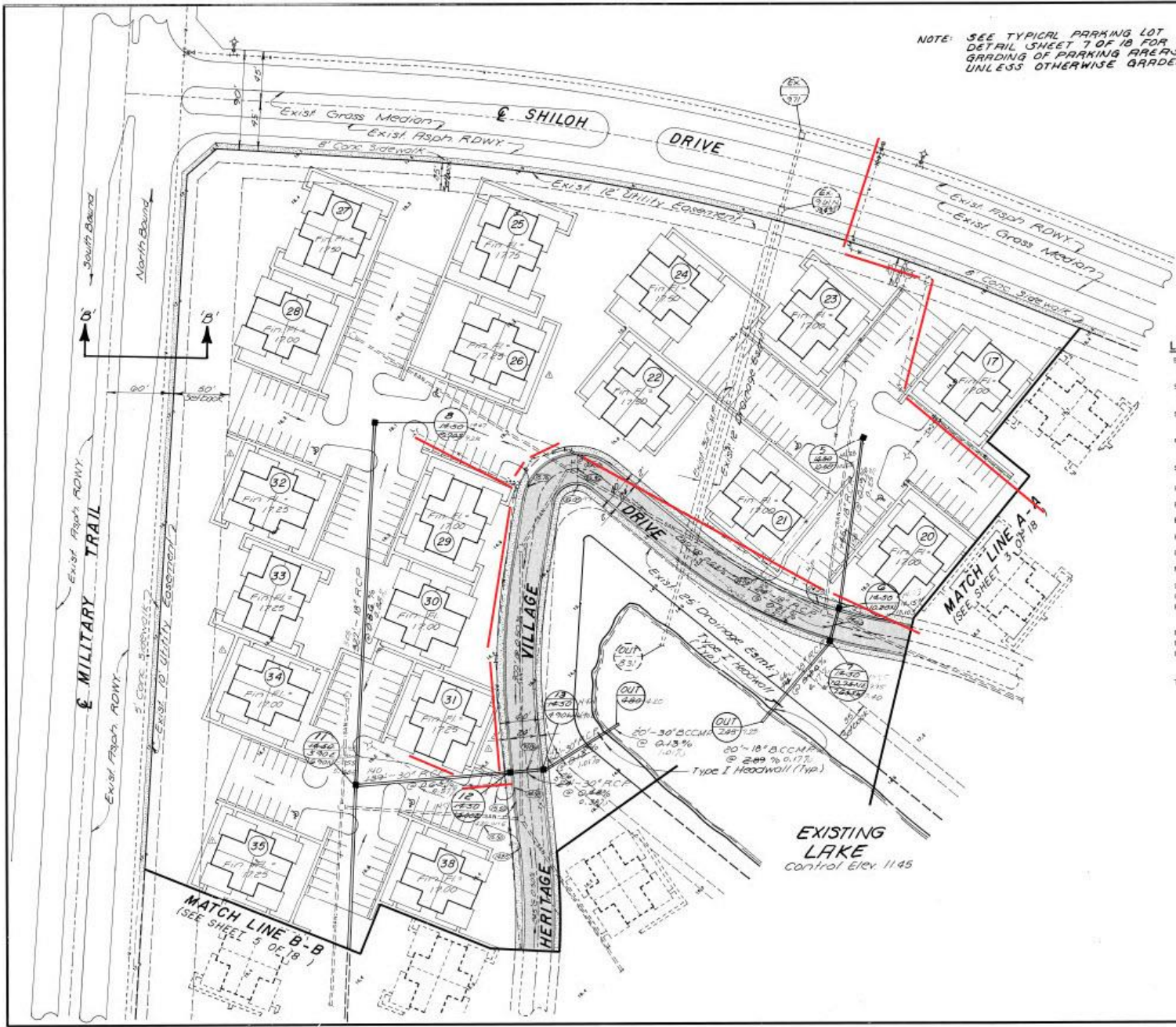


LOCATION MAP SECTION 11-430-42E

EXISTING LAKE
Control Elev. 11.45

EXISTING LAKE
Control Elev. 11.45

Type I Hoodwall (1/2)
OUT 100.00
20'-25' O.C.C.M.P.
C 0.43 %
S. 1.1%



NOTE: SEE TYPICAL PARKING LOT DETAIL (SHEET 7 OF 18) FOR GRADING OF PARKING AREAS UNLESS OTHERWISE GRADED



LEGEND

EXISTING STORM SEWER WITH CATCH BASIN	
STORM SEWER LINE WITH JUNCTION BOX	
STORM SEWER LINE WITH CATCH BASIN	
EXISTING SEWER LINE WITH MANHOLE	
SEWAGE FORCE MAIN	
WATERLINE	
PROPOSED ELEVATION	
EXISTING ELEVATION	
HIGH POINT	
DIRECTION OF FLOW	
FINISHED FLOOR ELEVATION	
STRUCTURE NUMBER	
GRATE/RIM ELEVATION	
F.L. ELEVATION	
EX. STRUCTURE NUMBER	
EX. GRATE/RIM ELEVATION	
EX. F.L. ELEVATION	
TYPICAL BUILDING NO.	



FILE NO.
86-168
 PAVING, GRADING, AND DRAINAGE PLAN
 FOR
HERITAGE VILLAGE

DATE	BY	CHK'D
11/25/85	JAY/PC	
11/25/85	ELB/PC	
11/25/85	ELB/PC	

REVISIONS

REV.	DESCRIPTION
1	Change Utility
2	Grading
3	Rev. Sewer Re-Cover

SCALE: 1"=40'

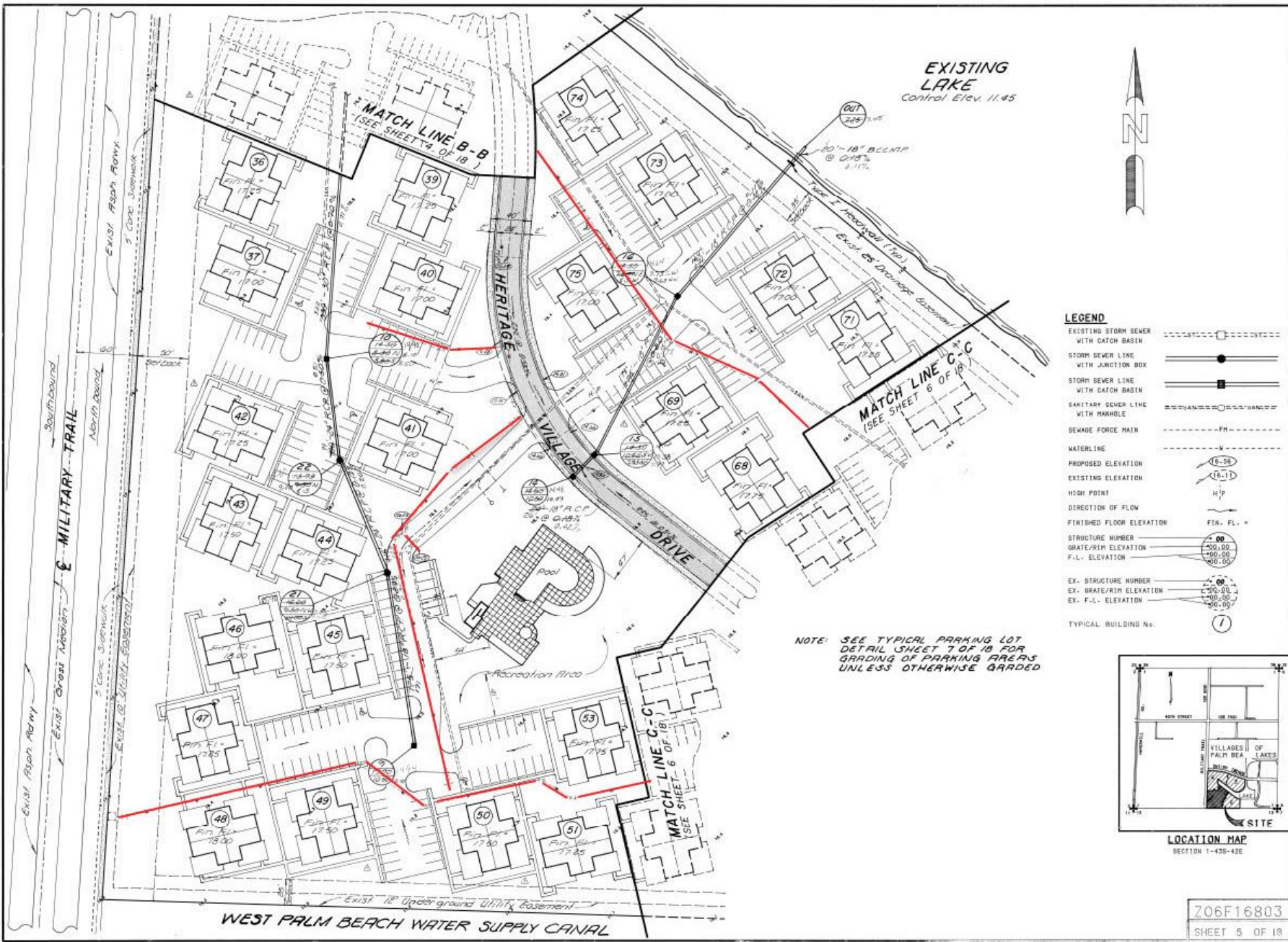
DATE: SEPT 1985

BY:	R.A.C.	PLANNERS
CHK'D:	J.C.P.	TESTING
APP'D:	J.P.G.	SURVEYORS

1301 CORPORATE DRIVE SUITE 130
 BOYTON BEACH, FLORIDA 33433 PH: (305) 738-9944

LAWSON, NOBLE & ASSOCIATES, INC.

Z06F16802
 SHEET 4 OF 18



EXISTING LAKE
Control Elev. 11.45



LEGEND

EXISTING STORM SEWER WITH CATCH BASIN	
STORM SEWER LINE WITH JUNCTION BOX	
STORM SEWER LINE WITH CATCH BASIN	
SEWAGE FORCE MAIN WITH MANHOLE	
SEWAGE FORCE MAIN	
WATERLINE	
PROPOSED ELEVATION	
EXISTING ELEVATION	
HIGH POINT	
DIRECTION OF FLOW	
FINISHED FLOOR ELEVATION	
STRUCTURE NUMBER	
GRATE/RIM ELEVATION	
F.L. ELEVATION	
EX. STRUCTURE NUMBER	
EX. GRATE/RIM ELEVATION	
EX. F.L. ELEVATION	
TYPICAL BUILDING No.	

NOTE: SEE TYPICAL PARKING LOT DETAIL SHEET 7 OF 18 FOR GRADING OF PARKING AREAS UNLESS OTHERWISE GRADED



LOCATION MAP
SECTION 1-430-42E

Z06F16803
SHEET 5 OF 18

FILE NO. **86-168**

PAVING, GRADING, AND DRAINAGE PLAN
FOR
HERITAGE VILLAGE

SCALE: 1"=40'	DATE: 12/15/83	REVISED	BY	DATE
DATE: SEPT 1985	REV. 1	REV. 2	REV. 3	REV. 4
BY: E.A.C.	REV. 1	REV. 2	REV. 3	REV. 4
BY: J.M.P.	REV. 1	REV. 2	REV. 3	REV. 4
BY: P.S.	REV. 1	REV. 2	REV. 3	REV. 4

REVISIONS:

- REV. 1: Drainage lines - As shown
- REV. 2: Rev. Drainage lines - As shown
- REV. 3: Rev. Drainage lines - As shown
- REV. 4: Rev. Drainage lines - As shown

APPROVED:

E.A.C. (E.A.C.)

J.M.P. (J.M.P.)

P.S. (P.S.)

JOB NO. 86-158

LAWSON, NOBLE & ASSOCIATES, INC.
ENGINEERS PLANNERS TESTING SURVEYORS
1301 CORPORATE DRIVE SUITE 100
BOYTON BEACH, FLORIDA 33435 PH: (407) 728-9944

No water lines show on this 4th print

WATER LINE -----W-----

EXISTING LAKE
Control Elev. 11.45



NOTE: SEE TYPICAL PARKING LOT DETAIL SHEET 7 OF 18 FOR GRADING OF PARKING AREAS UNLESS OTHERWISE GRADED

LEGEND

EXISTING STORM SEWER WITH CATCH BASIN	---ST---
STORM SEWER LINE WITH JUNCTION BOX	---S---
STORM SEWER LINE WITH CATCH BASIN	---S---
SANITARY SEWER LINE WITH MANHOLE	---SAN---
SEWAGE FORCE MAIN	---FM---
WATERLINE	---W---
PROPOSED ELEVATION	(6.56)
EXISTING ELEVATION	(6.1)
HIGH POINT	H.P.
DIRECTION OF FLOW	→
FINISHED FLOOR ELEVATION	FIN. FL. +
STRUCTURE NUMBER	00
GRATE/RIM ELEVATION	+00.00
F.L. ELEVATION	+00.00
EX. STRUCTURE NUMBER	00
EX. GRATE/RIM ELEVATION	+00.00
EX. F.L. ELEVATION	+00.00

TRACT 'D' TYPICAL BUILDING No. 1



LOCATION MAP
SECTION 1-435-42E

Z06F16804
SHEET 6 OF 18

FILE NO.
86-168

PAVING, GRADING, AND DRAINAGE PLAN
FOR
HERITAGE VILLAGE

DATE	BY	REVISED
11/18/88	SK	Rev. Drainage
12/1/88	SK	Rev. Structure

LAWSON, NOBLE & ASSOCIATES, INC.
ENGINEERS PLANNERS TESTERS SURVEYORS
1501 CORPORATE DRIVE SUITE 150
BOYDTON BEACH, FLORIDA 33435 PH: (305) 736-9844
JOB NO. 86-168

